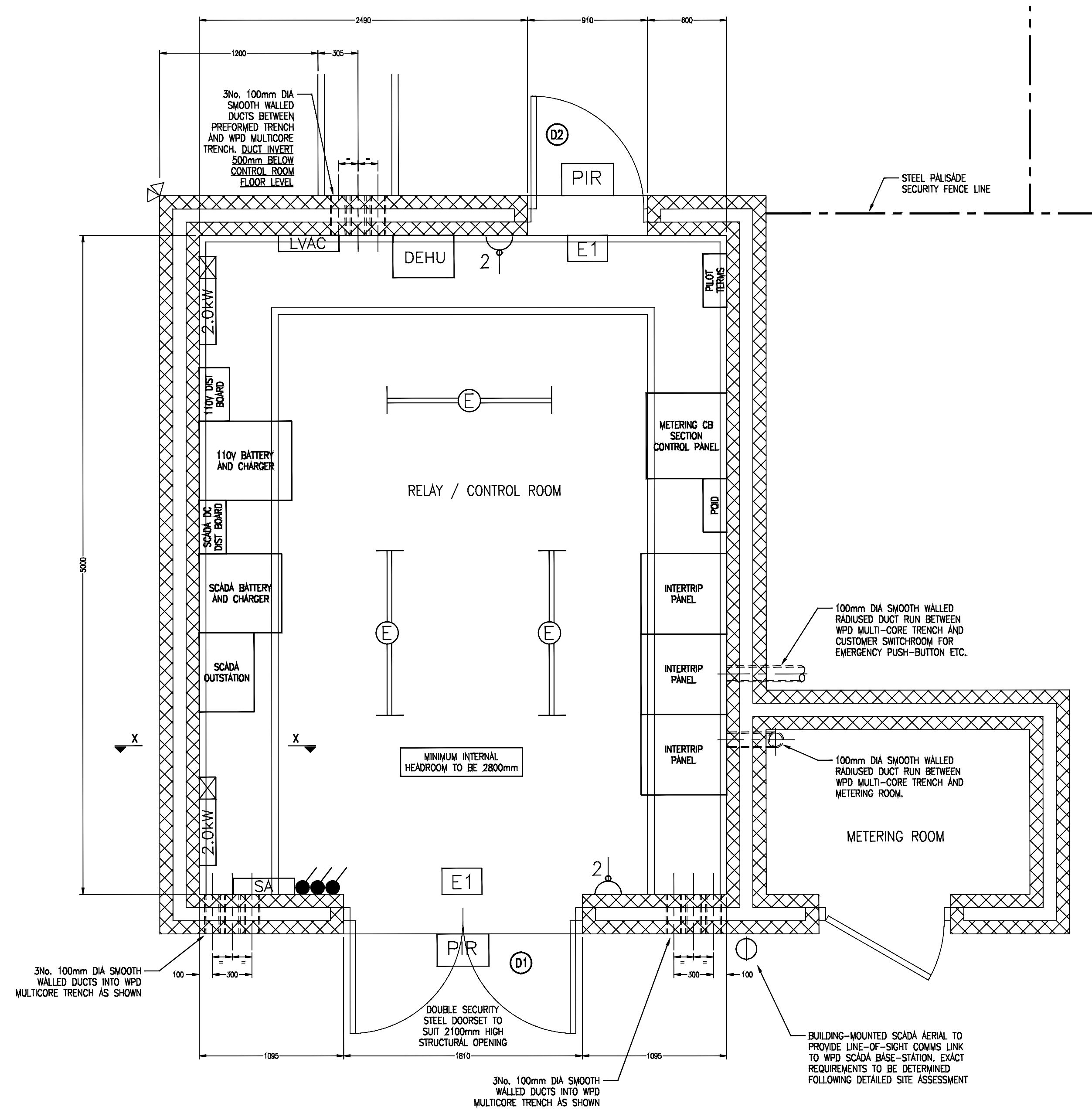


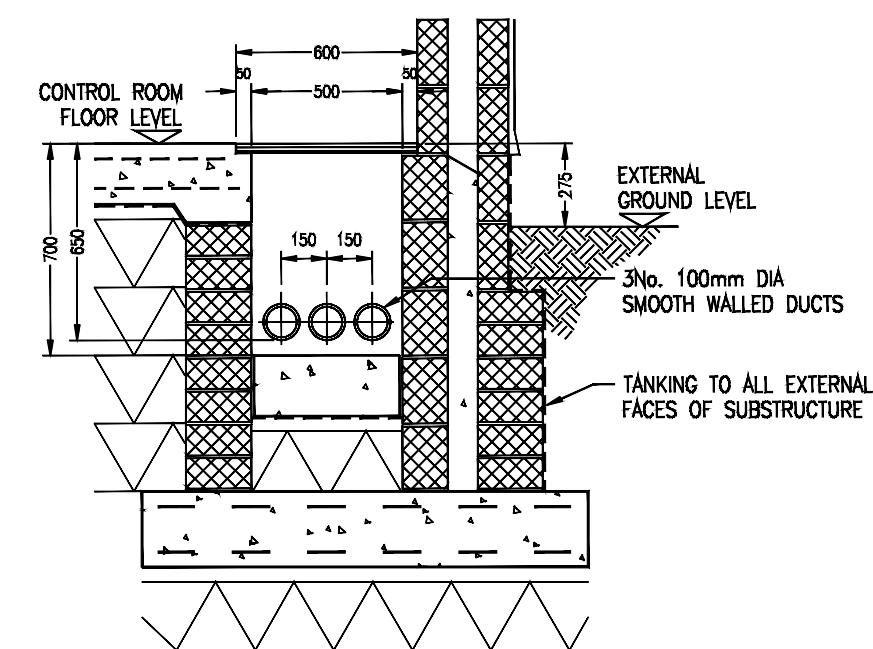
CONTROL ROOM DETAILS (1:25)



KEY TO LVAC SYMBOLS

- LVAC LV METALCLAD 16 DISTRIBUTION BOARD WITH 4No SPARE 20A MCB WAYS RESERVED FOR WPD USE
- 130 TWIN SWITCHED SOCKET OUTLET
- BT BT MASTER SOCKET (DEDICATED EXT LINE)
- TWIN 58W BATTEN FLUORESCENT LUMINAIRE WITH INTEGRAL EMERGENCY
- PIR PIR ACTIVATED 250W METAL HALIDE FLOOD LIGHT
- E1 ILLUMINATED EMERGENCY EXIT SIGN
- DEHU EBAC C030 DEHUMIDIFIER WITH TRACE HEATED CONDENSATE DRAIN TO SUITABLE POINT OF DISPOSAL
- SINGLE GANG LIGHT SWITCH (ONE FOR BUILDING EXT LIGHTING, 1 FOR COMPOUND LIGHTING AND 1 FOR ALL INTERNAL WITH EMERGENCY TEST SOCKET)
- 2.0kW 2.0kW CONVECTOR HEATER
- SA INTRUDER ALARM (SINGLE ZONE) WITH DOOR CONTACT ACTUATION FOR ALL WPD DOORS
- 250W TWIN-HEAD METAL HALIDE FLOOD LIGHT

- D1 DOUBLE SECURITY STEEL DOORSET TO SUIT 2100mm HIGH STRUCTURAL OPENING. EXTERNAL ACCESS DEVICE TO RECEIVE WPD SUPPLIED EURO PROFILE CYLINDER. INTERNAL FIRE EXIT PANIC BARS TO BOTH LEAVES. HEAVY DUTY HOLD-OPEN DEVICES TO BE FITTED
- D2 SINGLE DOOR AS ABOVE



SECTION THROUGH TRENCH ON ARROWS X-X

REVISION	DRAWING NUMBER	DWG DRAWING NAME	170602025
DATE			
DRAWING TITLE	PROJECT NAME AND ADDRESS	APPROVAL STAMP	SCALE
Figure 4.5b Control Room	Postcombe and Lewknor Solar Farm		1:25
	CUSTOMER	STATUS	FORMAT
		Preliminary	A1
			SHEET
			1/1