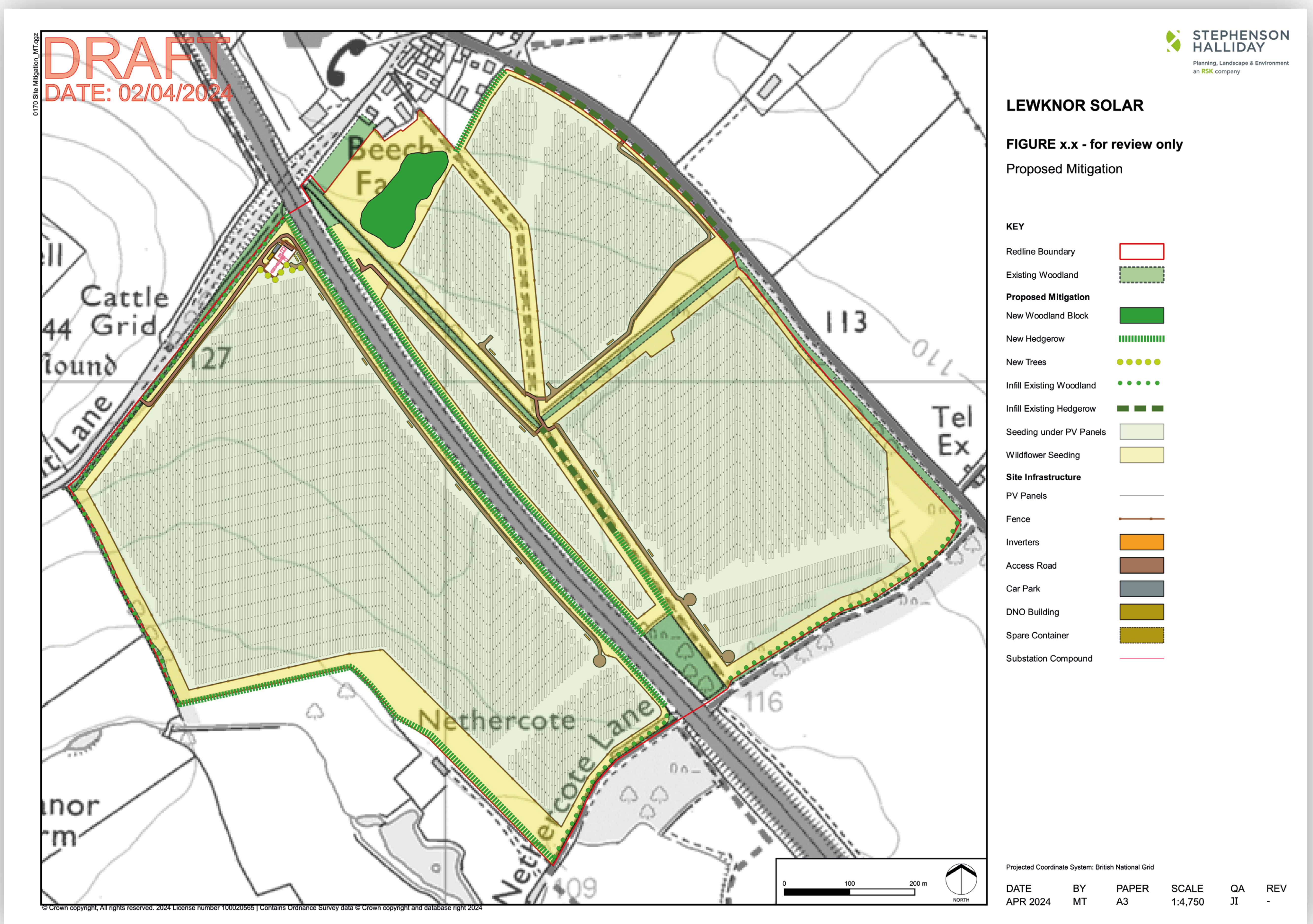


Lewknor Solar Farm

Landscape, Ecology, and the Environment

Biodiversity

Through the introduction of The Environment Act (2021) all major developments are required to deliver a biodiversity net gain of at least 10%, but we aim to achieve a significantly greater gain. Giving the land a break from intensive farming will help with improvements of the quality of the soil. Extensive hedgerow and wildflower planting will also provide significant improvements in local wildlife habitat.



Drainage and Flood Risk

The site is located in Flood Zone 1, which represents the lowest level of risk. Our proposals will offer an improvement on the existing drainage using a SuDS (Sustainable Drainage System) design and our planning application will be supported by a Flood Risk Assessment.

Archaeology

A Desktop Assessment and a Geophysical Survey have been undertaken to identify areas of potential archaeological assets within the site boundary. A full Heritage Impact Assessment will be submitted in support of the planning application.

Construction

We will agree a Construction and Environmental Management Plan with the Council as part of the planning process, which will dictate how and when construction will take place to help keep disruption to a minimum. Once the solar farm is operational, there will be minimal traffic generated, in the form of maintenance visits, travelling in a car or van.

View this information via the QR code below:



solar2

lewknorsolarfarm.co.uk

